

An aerial photograph of a city, likely Melbourne, Australia, completely obscured by a thick, white layer of clouds. The sky above is a mix of soft pinks, oranges, and blues, indicating a sunset or sunrise. The clouds are dense and cover the entire city area, with only a few dark, thin structures visible. The overall mood is serene and ethereal.

AUSTRALIA 108

M E L B O U R N E

An aerial photograph of Melbourne, Australia, taken from a high vantage point during sunrise. The sun is a bright, glowing orb on the horizon, casting a golden light over the city. Several hot air balloons are scattered across the sky. In the foreground, a tall, slender tower structure is visible. The city's skyline is filled with various buildings, and a river winds through the lower part of the frame. The overall atmosphere is serene and majestic.

LIVE BEYOND INCREDIBLE

“
*Going where no other has gone before,
Australia's tallest tower rises above Southbank's
glittering streetscape. It embraces the limitless
sky, revealing dramatic panoramas no one has
ever seen. Moments from Melbourne's cultural,
arts and entertainment precincts, the best of the
world's most liveable city is at your feet.*
”

KARL FENDER
Founding Partner of
Fender Katsalidis Architects

MELBOURNE'S HIGHEST PRIZED POSSESSION

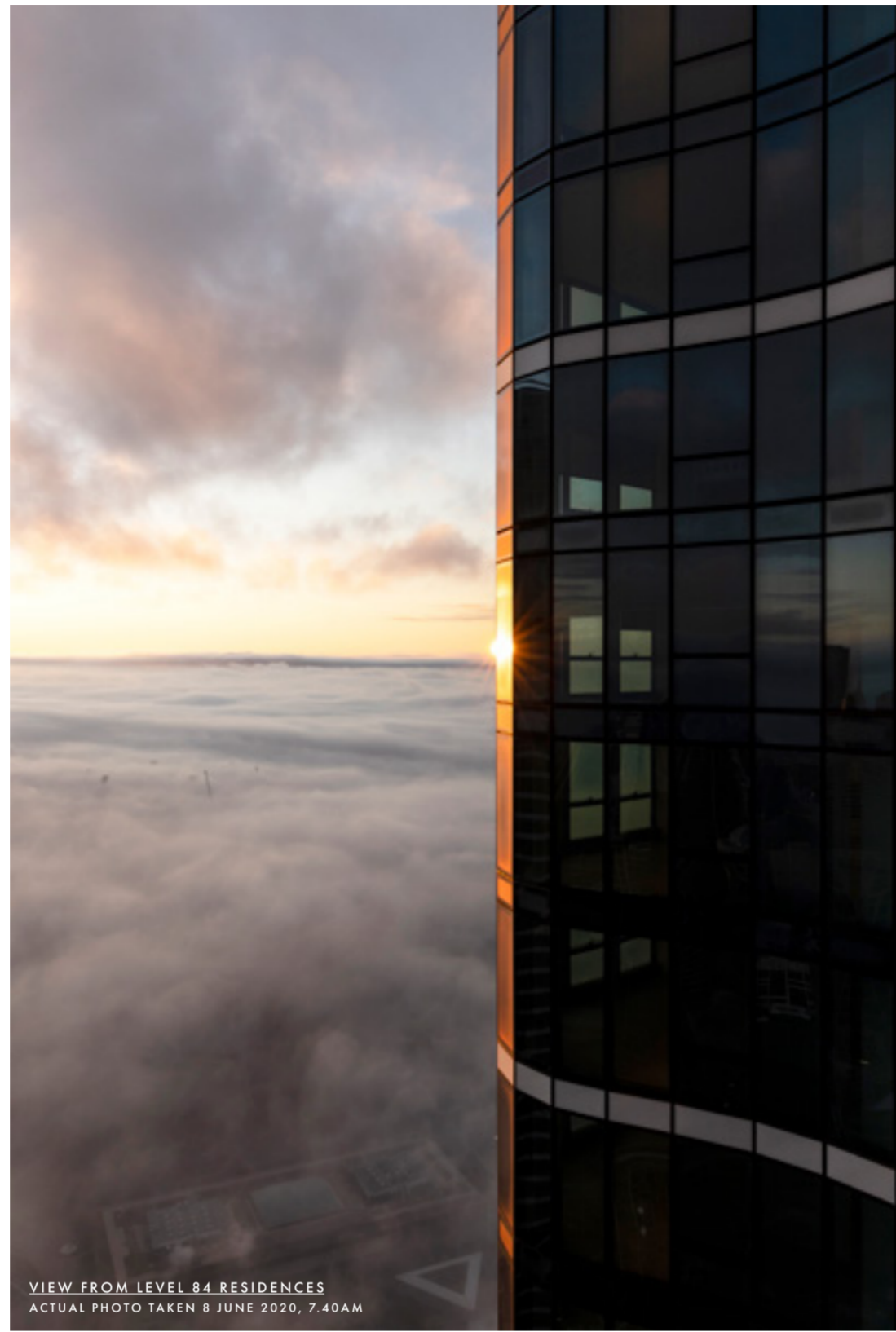
70 SOUTHBANK BOULEVARD,
SOUTHBANK VIC 3006

“

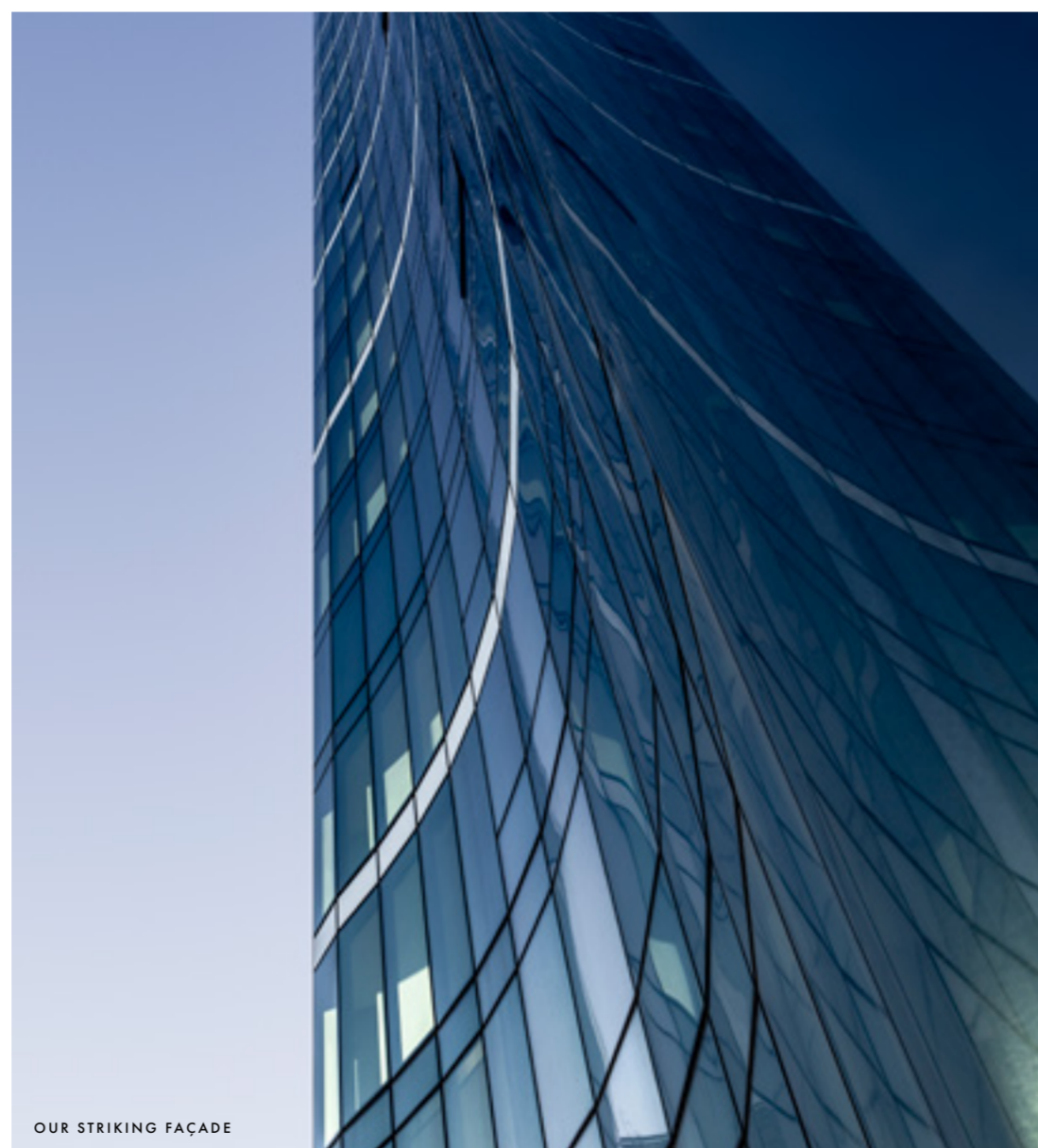
It is a landmark building, and the Starburst adds a point of difference, which hasn't been emulated anywhere else. A stand out in the Southbank area, it is a trophy, which shows how good Melbourne is.

”

GRAHAM COTTOM
Regional Managing Director, Multiplex



VIEW FROM LEVEL 84 RESIDENCES
ACTUAL PHOTO TAKEN 8 JUNE 2020, 7:40 AM



OUR STRIKING FAÇADE

Soaring 319 metres above this extraordinary city, Australia 108 is a landmark of unsurpassed excellence. It bridges Melbourne's worldly pleasures on the ground plane with the boundless freedom of the sky above. Bringing you the highest residences in the southern hemisphere, no other address offers the opportunity to live at such amazing altitudes. Elevate your lifestyle with exclusive resident facilities akin to the most indulgent hotels. They bring together an incredible community in a golden starburst on the tower, inspired by the Commonwealth Star and the Australian flag. Why wait to live it up? Melbourne's tallest icon is ready for you to move in now.



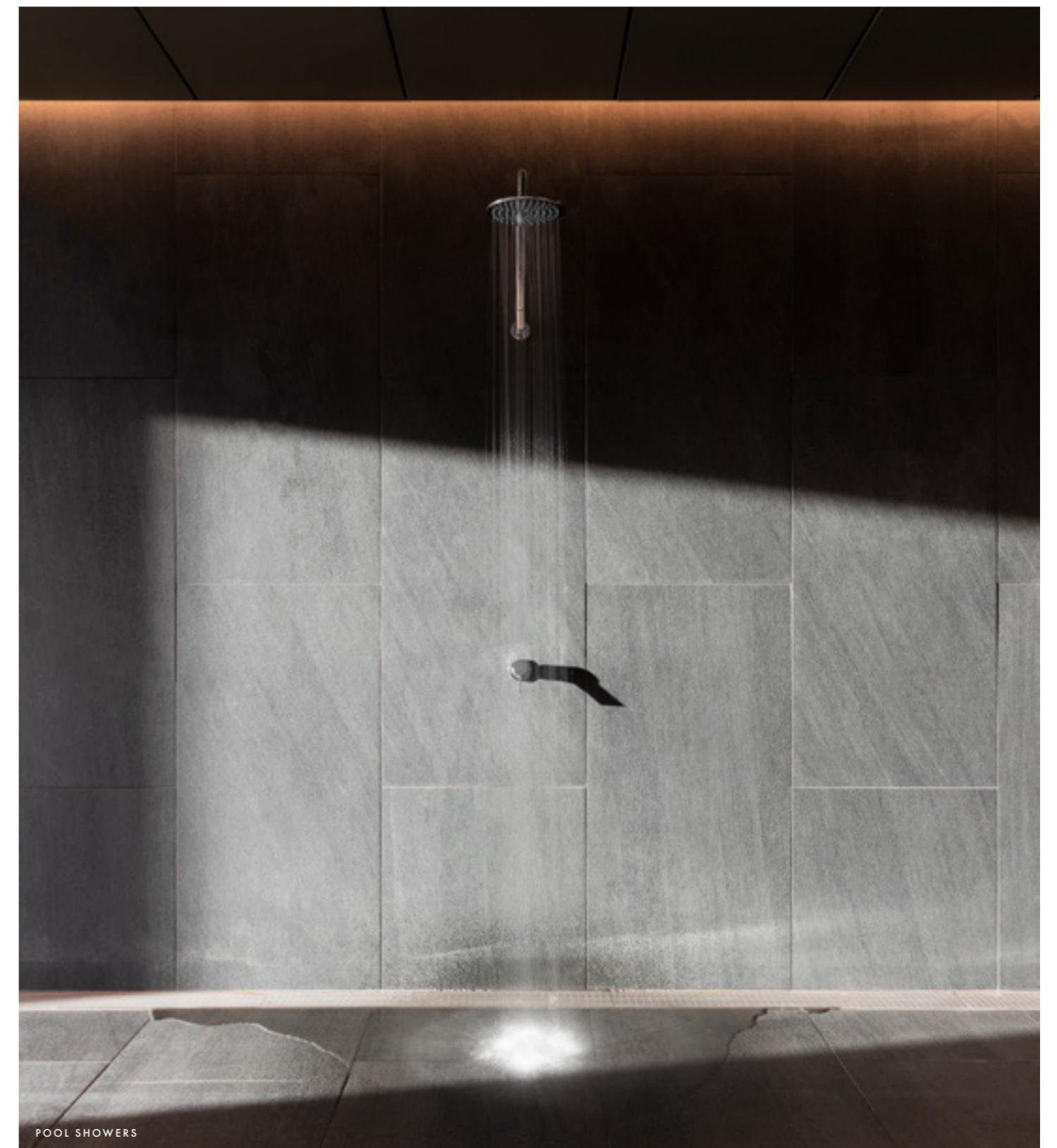
VIEW FROM SOUTHBANK BOULEVARD

THE STAR IS BORN

“
*World Class Global's
commitment to beautiful
design and glorious amenity
will make Australia 108
one of Australia's most
envied addresses.*
”

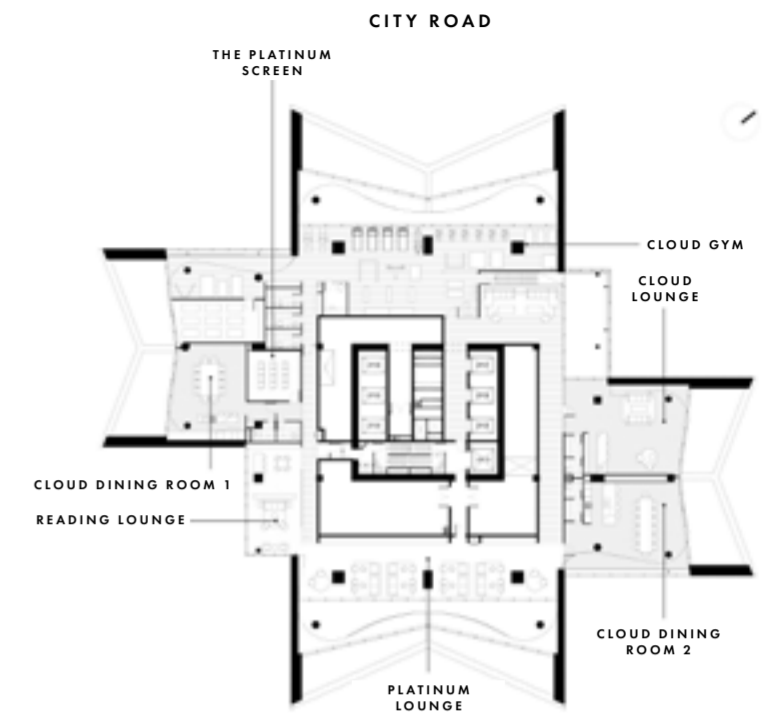
DAVID NG
*Chief Executive Officer
of World Class Global*

Australia 108 is a masterpiece that showcases our passion for extraordinary living. Delivering first-class, unrivaled amenities to discerning residents, the grand lobbies make a stunning first impression with a sumptuous lounge and hotel-style porte-cochère. At the Sky Rise Club on Level 11, do your laps at the pool, work out at the well-equipped gym and perhaps entertain guests at the theatre, grand dining room or virtual golf room. A host of resort-style facilities further add a sense of escape, including a steam room and sauna. Exclusive facilities at the 2,800sqm Star Club on Level 70 and 71 offer a world of entertainment and leisure with 360 degree panoramic views to city, gardens and bay. Bask in the dual double-height full glass infinity pools amongst the clouds, look forward to two state-of-the-art gyms, five sophisticated dining rooms, expansive lounge rooms, a reading room, a private cinema and even a sky garden with soaring ceilings.



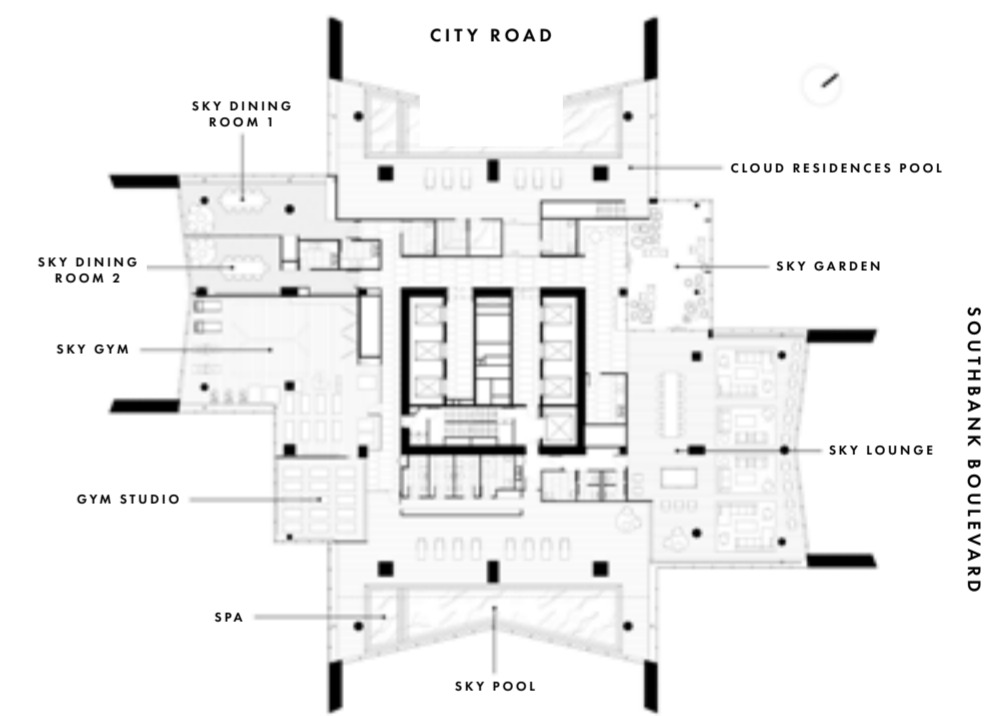


STAR CLUB / CLOUD 71



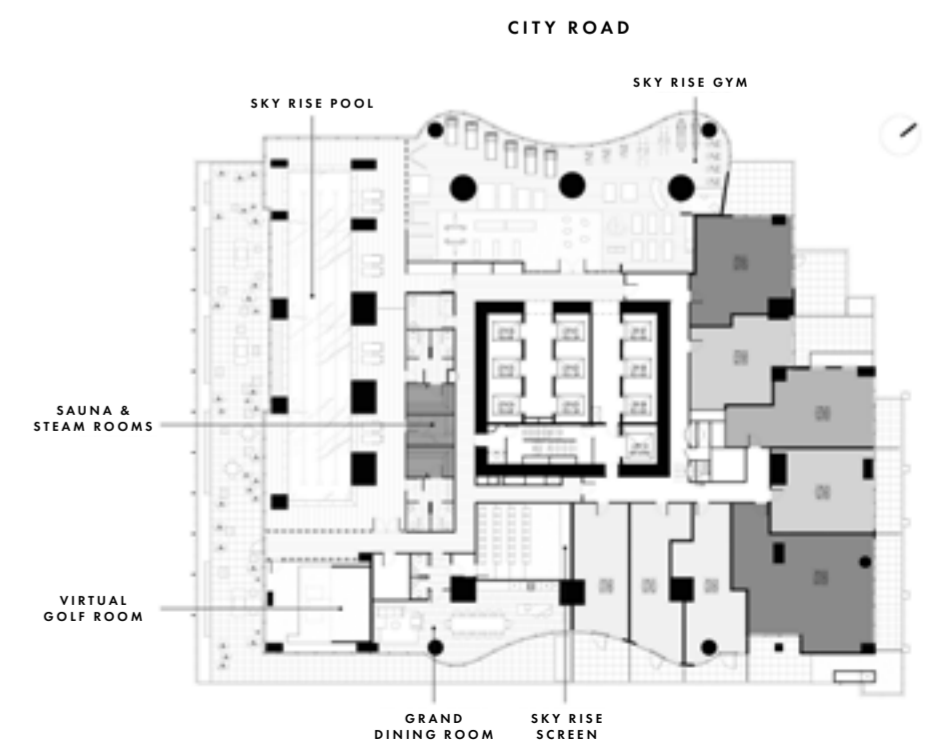
SOUTHBANK BOULEVARD

STAR CLUB / STAR 70



SOUTHBANK BOULEVARD

SKY RISE CLUB / LEVEL 11



SOUTHBANK BOULEVARD



“
*Behold, an elevated way of life,
that cannot be imagined
from the ground below.*
”

THE SKY AWAITS

1 & 2 BEDROOM
SKY RISE RESIDENCES

“
We want, as architects and designers, to contribute to the urban fabric of Melbourne. Certainly, the interiors, from the lobby to the apartments, have been inspired by the building’s architecture, celebrating the panorama of sky living.
”

CHRIS MCCUE
Director of Carr Design

Thoughtfully crafted by Melbourne-based award-winning design firm, Carr Design, each apartment presents impressive layouts that are carefully considered. Every detail, from quality finishes to appliances and fittings, have been curated for the way you want to live. Floor-to-ceiling glazing brings in abundant natural light and priceless panoramas with multiple aspects. You are always oriented towards breathtaking views, so close to the stratosphere you could reach for the stars. Each space has been designed to deliver maximum pleasure, amenity and style. Celebrating the tower’s feminine curves, the interiors exude a timeless elegance, celebrating sky living like Melbourne has never seen. Its rich, yet understated material palette has been inspired by the building’s architecture, a sophisticated aesthetic pleasing to all the senses. Reminiscent of the world’s finest hotel suites, these spectacular residences are ready to deliver the lifestyle you’ve been waiting for.



TOUCH THE CLOUDS

3 BEDROOM CLOUD RESIDENCES
& SUB PENTHOUSES



The epitome of grandeur and exquisite living, the Cloud Residences boast floor-to-ceiling glass and sweeping panoramas from multiple aspects. Embrace grand vistas from every room, be it the capacious living and dining or the beautiful bedrooms and ensuites. Let abundant natural light illuminate your lifestyle, one that surpasses the highest of all expectations. Every detail is crafted to perfection, where only the best will do. Curated for the most discerning of residents, the entertainer's kitchen and bathrooms are dressed in enduring natural stone, while premium appliances and timeless fittings marry functionality and beauty. For the ultimate party host, selected apartments even feature a hidden scullery or butler's pantry. Retreat into your opulent master bedroom, where a large walk-in-robe leads into an elegant ensuite with a standalone bath. Exclusively created to please, house-like proportions ensure there is no compromise on glorious space, perfect for your prized collection of statement furniture and artwork. Move into your castle in the sky now and make it your own.



THE ICONIC AUSTRALIA 108 FROM YARRA RIVER



LIVE AN ACTIVE OUTDOOR LIFESTYLE



ENJOY THE BEST OF SOUTHBANK

RESIDE IN THE NEW CENTRE OF MELBOURNE

SOUTHBANK
Melbourne's Future Centre

CULTURE CENTRIC

Southbank is home to Melbourne's cultural heart, with the city's arts and entertainment precincts within an easy walking distance. Some of the best Australian and international exhibitions, performances and concerts have made their way to the National Gallery Victoria, The Arts Centre, The Australian Ballet, local theatres and glamorous venues around the Crown Entertainment Complex.

THE FUTURE CENTRE

City of Melbourne has invested \$42 million to transform Southbank and secure its reputation as the city's premier arts and cultural destination for generations to come. It will transform Southbank with 2.5 hectares of new open green spaces, alongside infrastructure upgrades to improve access and activation. This ensures Southbank remains a vibrant place for all.

TASTE MAKER

Southbank is a destination for delicious dining, with many popular restaurants along the promenade. Across the river, the city's laneways and charming arcades reveal hidden top-hatted restaurants and hip cafes. Every turn of the corner promises unexpected culinary delights, from al fresco eateries to cosy little bars.

THE BEST SEAT IN MELBOURNE

Southbank is just moments from Melbourne's iconic sporting and event venues. The Rod Laver Arena is home to the Australian Open, as well as epic concerts by international stars. During the football season, the Melbourne Cricket Ground and Marvel Stadium attracts fans from all around, creating an energetic vibe that is palpable in the air.

3 MINS

walk to the Crown Casino and Entertainment Complex, with an array of fine restaurants, shopping, and riverside dining.

650M

to the Arts Precinct: National Gallery Victoria, The Australian Ballet, the Arts Centre and local theatres.

2KM

to major sporting venues including the Melbourne Cricket Ground, Rod Laver Arena, and Marvel Stadium.

TRAM#1

every 8 minutes to Melbourne CBD from Southbank Boulevard.

7 MINS

walk to Flinders Street Station



“
*Live the high life you've always wanted, one
you so deserve. Own a piece of incredible now,
a spectacular address ready to be yours.*
”

P H E N O M E N A L P R E S T I G E

PROUDLY DEVELOPED BY



WORLD CLASS GLOBAL

Disclaimer While all reasonable care has been taken in the preparation of this brochure and the particulars contained herein, it is intended to be a visual aid and does not necessarily depict the finished state of the property or object shown. No liability whatsoever is accepted for any direct or indirect loss or consequential loss or damage arising in any way out of any reliance upon this brochure. Purchasers must rely upon their own enquiries and inspections. Furniture is not included with the property. Dimensions and specifications are subject to change without notice. Illustrations and photographs are for presentation purposes and are to be regarded as indicative only. This brochure does not form part of, and is not, an offer or a contract of sale. The Vendor does not warrant the accuracy of the information or representations contained in the marketing material and makes no promise, representation or warranty (express or implied) as to the accuracy, reliability or completeness of the contents of the marketing material. As purchaser you cannot rely on the marketing material. The Contract embodies the only representations on which you can rely in relation to the dimensions and specifications of the apartment.