

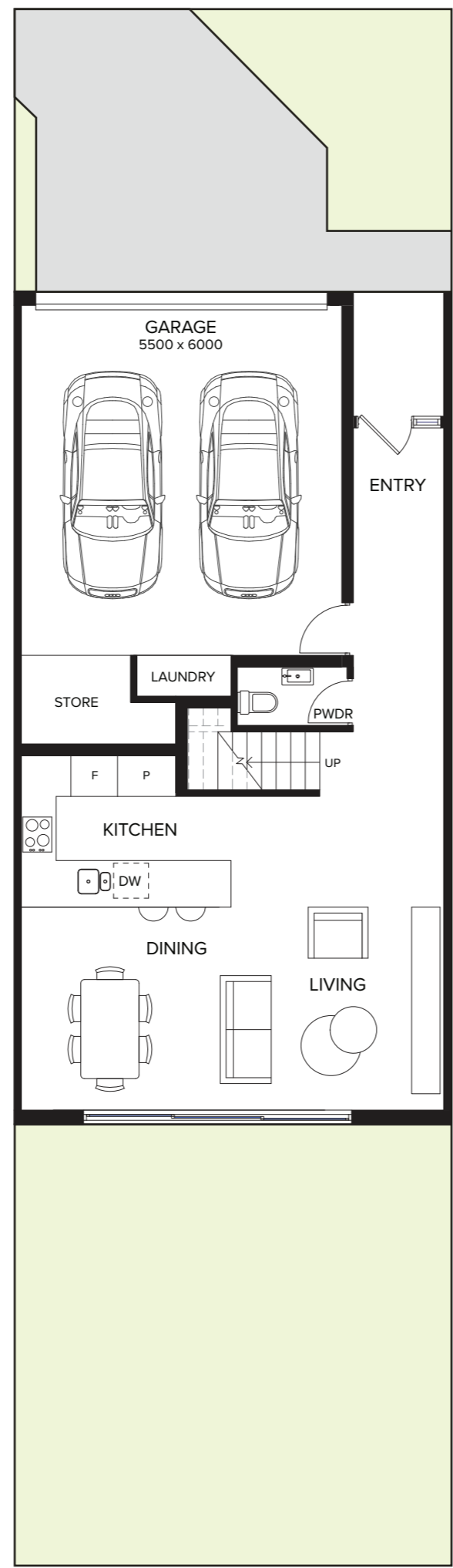


E

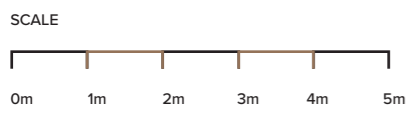
IRONWOOD

CRANBOURNE NORTH

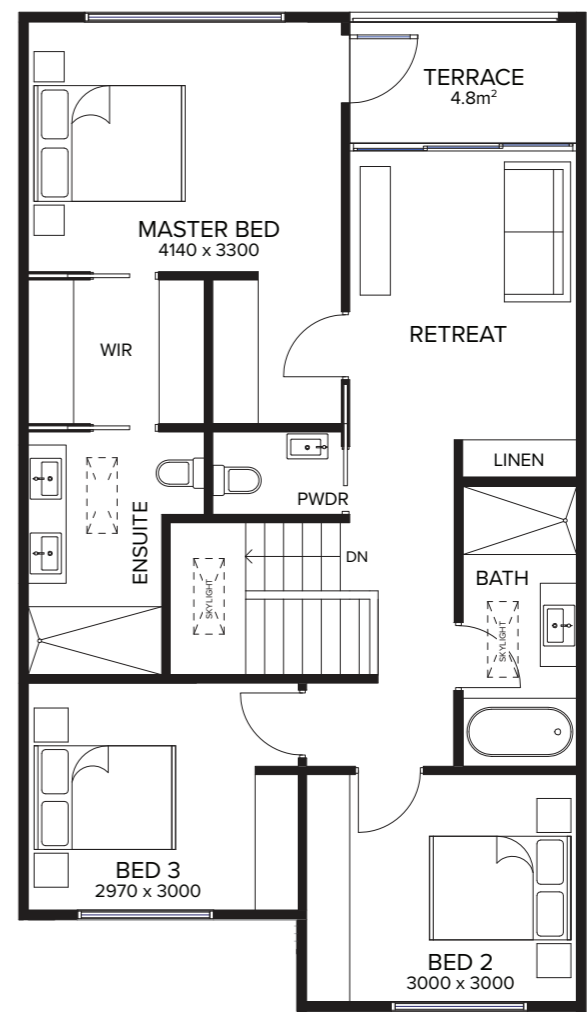
GROUND FLOOR



GROUND FLOOR	70.7m ²
FIRST FLOOR	90.2m ²
SUB TOTAL	160.9m ²
TERRACE	4.8m ²
PORCH	3.3m ²
GARAGE	33.0m ²
TOTAL AREA	202.0m²




FIRST FLOOR



IRONWOOD
CRANBOURNE NORTH

DISCLAIMER: The particulars in this document are set out as a general outline for the guidance of intending purchasers and do not constitute an offer and/or contract. All descriptions, dimensions, references to conditions and necessary permutations for use, and other details are given in good faith and are believed to be correct. However, any intending purchasers should not rely on them as statements and/or representations of fact and must satisfy themselves independently and where necessary seek legal advice. No third party agent and/or supplier has any authority to make and/or give any representation and/or warranty in relation to this development. Areas are calculated based on the Property Council of Australian Method of Measurement for Residential Property. Plans are indicative only and may differ slightly as a result of documentation and construction. Sizes and design may vary after actual construction. In addition, furniture is not included in the packages and landscaping shown is indicative only. CRANBOURNE LAND HOLDINGS Pty Ltd and/or its related entities are not responsible for any error and/or discrepancy in the information and will not be liable for any damage/s, cost, loss and/or liability arising in connection with the use of information in this document. (Feb 2018).



39-41 HUON PARK ROAD, CRANBOURNE NORTH 3977

LENNIUM
— GROUP —